

Two-way motorized turnstile in robust, durable and elegant design.



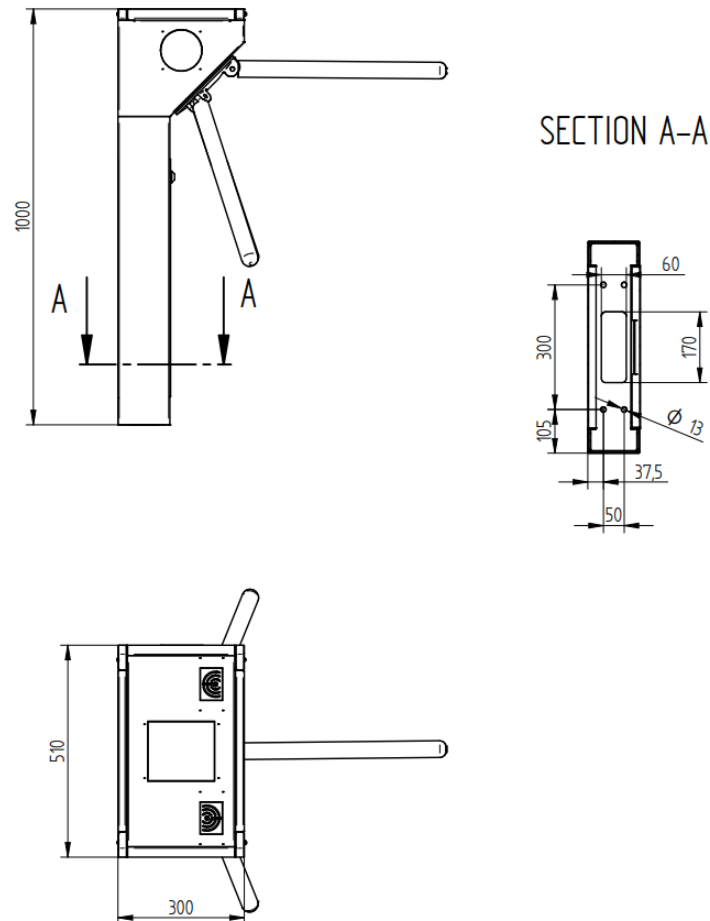
## Description

- The cabinet is made of brushed stainless steel, 1.5 mm thick, rotating arms made of stainless steel tubes, diameter 40 mm, length 500 mm.
- Removable cover with lock.
- Brushless motor with gearbox and brake, automatic arm folding in case of alarm (anti-panic)
- Built-in control unit.
- Controlled entrance, automatic exit.
- Double-sided LED guidance pictograms.
- The construction of turnstile allows the integration of a payment machine for collecting fees, including a discount voucher printer.
- The ASTER 101-DL is equipped with a double rotor locking system.

## Technical specification

<b>MODEL:</b>	<b>ASTER</b>
Dimensions:	510 x 1000 x 300 mm
Cabinet material:	brushed stainless steel
Suitable for:	indoor and outdoor
Width of passage:	600 mm
Capacity of passage:	40 pers./min.
Power supply:	230 V AC, 50Hz
Engine:	24 VDC/40W
Weight:	45 kg

## Dimensions: (mm)



## ASTER with payment machine

The ASTER turnstile is advantageously used for installation in places where a fee is required, e.g. public toilets. The payment part can be equipped as required, e.g. with refund of the over-payment or only without refund with the option of card payment, or with printing of a receipt for later use of a discount on purchases (e.g. petrol stations).



*With a constant view of adopting the latest technological development  
Detomatic reserves the right to amend the information above, at any time.*